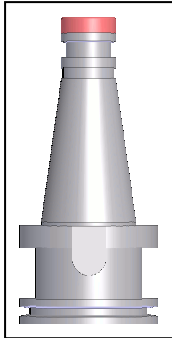
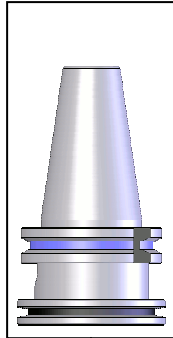


## Item number: Spindle speeder type 834-022

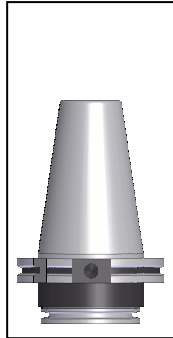
DIN 2080  
SK 40  
500-412-1210



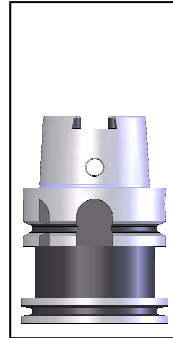
DIN 69871  
SK 40  
500-413-1201



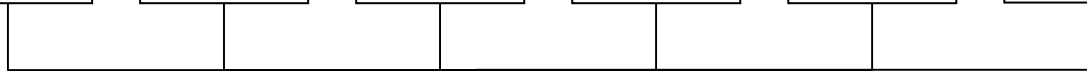
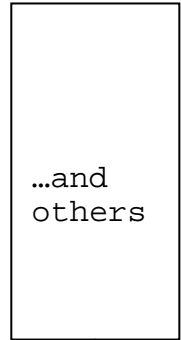
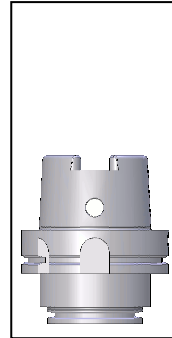
DIN 69871  
SK 50  
500-513-1204



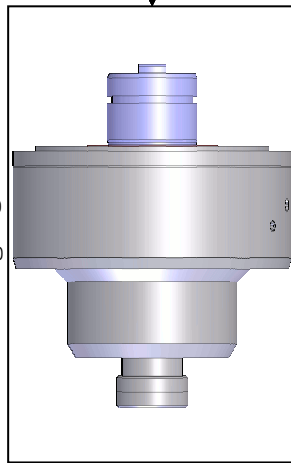
DIN 69893  
HSK 63  
500-263-1228



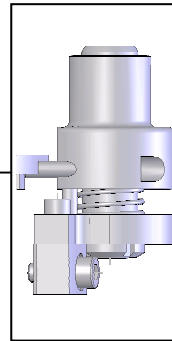
DIN 69893  
HSK 100  
500-210-1229



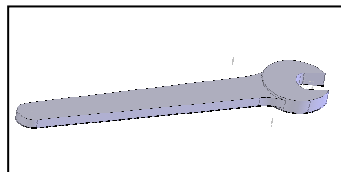
Spindle speeder  
1:5,7  
 $n_{max}$ : 18.000  
834-022-500



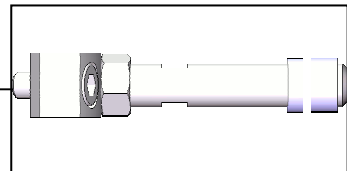
Stop- and  
arrester  
attachment



85mm:  
500-707-001



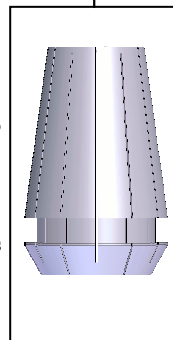
Wrench  
2103-010



Torque bar  
500-000-757

Collet set  
DIN 6499 ER25  
1358-015

Single  
collets:  
please ask us



Nut ER25  
1340-015  
With wrench  
2105-001

