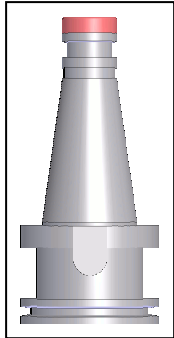
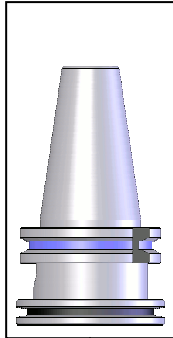


## Item number: Spindle speed increaser 834-104

DIN 2080  
SK 40  
500-412-99001



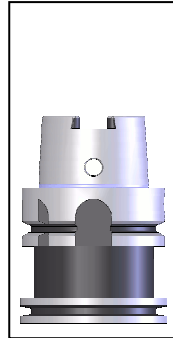
DIN 69871  
SK 40  
500-413-99001



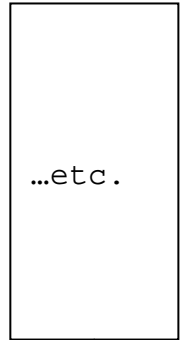
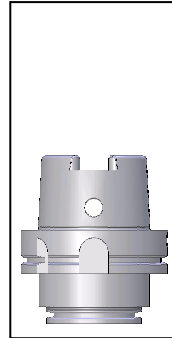
DIN 69871  
SK 50  
500-513-1236



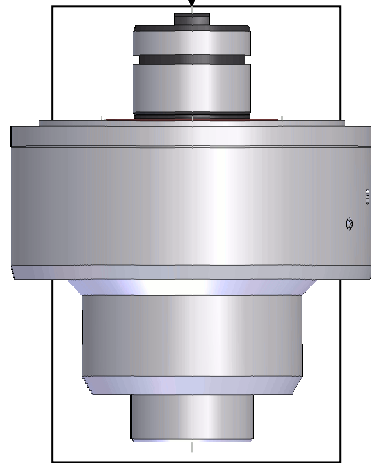
DIN 69893  
HSK 63  
500-263-99002



DIN 69893  
HSK 100  
500-210-99001



Spindle speed  
increaser  
1:5,7  
 $n_{max}: 18.000$   
834-104-001

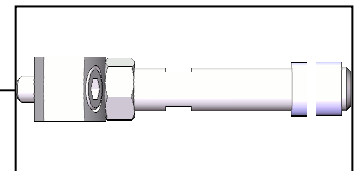
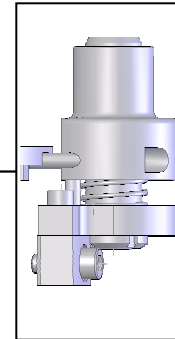


[Heimatec HT4](#)

Stopp- and  
arrester unit

80mm:  
500-707-001

110mm:  
500-707-002



Torque bar  
500-000-757